

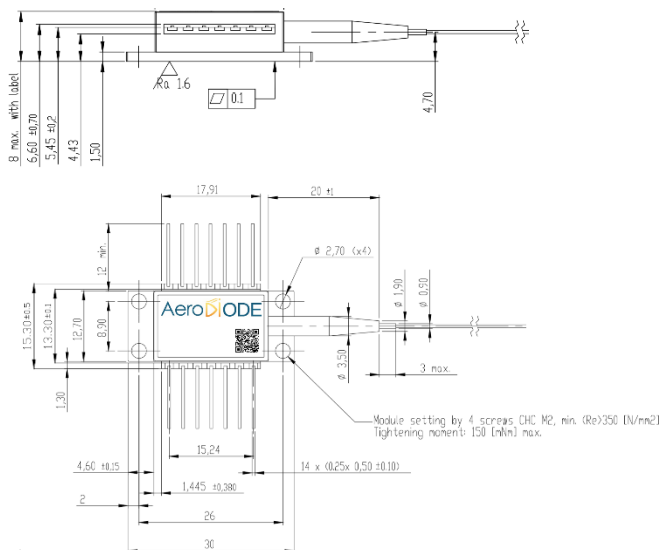
940 nm laser diode

250 mW / singlemode fiber / Butterfly package

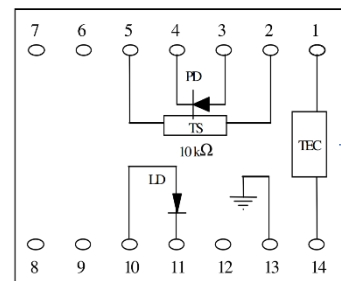
Reference: 940LD-1-0-0

SPECIFICATIONS	Unit	Min	Typ	Maximum
Output Power	mW		250	
Center Wavelength (OPTION 2: FBG version)	nm	935 (939)	940 (940)	945 (941)
Spectral Width (FWHM) / (OPTION 2: FBG version)	nm		1 (0.2)	
Threshold Current	mA		40	100
Operating Current	mA		400	600
Operating Voltage	V		1.8	2.0
Wavelength shift w Temperature (OPTION 2: FBG version)	nm/°C		0.3 (5 10 ⁻³)	
Wavelength shift w Current (OPTION 2: FBG version)	nm/A		5 (~0)	
Side mode suppression ratio (OPTION 2: FBG version)	dB		(20)	
Internal photodiode responsivity	mA/W	0.04	3	10
Internal photodiode dark current	nA		5	40
TEC current (25°/case@70°)	A		1.1	
TEC voltage (25°/case@70°)	V		1.9	
Internal thermistor (25°)	kOhm	9.5	10	10.5
Fiber type (OPTION 1 : PM fiber)	Hi1060 or equivalent (PM980 or equivalent)			
Fiber bend radius	mm	25		
Fiber connector	Yes (FC/APC)			
Storage temperature	°C	-40		85
Operating case temperature	°C	-20		70
Operating chip temperature	°C	20		40
Laser diode reverse voltage	V			2

Form factor:



Laser diode pinning:



Totally floating pin-out

940 nm laser diode 10 W / 105 μm fiber

Reference: 940LD-2-0-0

SPECIFICATIONS	Unit	Min	Typ	Maximum
Output Power	W	10		
Center Wavelength	nm	935	940	945
Spectral Width (FWHM)	nm		3	
Threshold Current	A		0.7	1.0
Operating Current	A		11.5	13.0
Operation Voltage	V		1.7	1.8
Conversion Efficiency	%		50	
Spot ratio (0.15/0.22)	%		85	
Wavelength shift w Temperature	nm/°C		0.3	
Wavelength shift w Current	nm/A		0.7	
Slope Efficiency	W/A		0.9	
Back reflection isolation stage	nm	1020		1200
Back reflection isolation	dB		30	
Storage Temperature	°C	-30		70
Operating Temperature	°C	15	25	55
Minimum Fiber Bend Radius	mm		37.5	
Fiber Buffer/tube Diameter	μm		900	
Fiber Clad Diameter	μm		125	
Fiber Core Diameter	μm		105	
Fiber Numerical Aperture	NA		0.22	
Soldering Temperature	°C			260
Soldering time	s			10
Dimensions		31*17*6.1		
Mounting holes diameter/distances		2.6 / 7.5 * 13		
Fiber connector		Yes (SMA 905)		
ROHS Compliant		Yes		
Please solder the pins when the level of current is over 6A				



940 nm laser diode 30 W / 105 μm fiber

Reference: 940LD-3-0-0

SPECIFICATIONS	Unit	Min	Typ	Maximum
Output Power	W	30		
Center Wavelength	nm	935	940	945
Spectral Width (FWHM)	nm		6.0	
Threshold Current	A		0.85	1.0
Operating Current	A		11.5	13.0
Operation Voltage	V		5.0	6
Conversion Efficiency	%		50	
Wavelength shift w Temperature	nm/°C		0.3	
Wavelength shift with current	nm/A		0.7	
Slope Efficiency	W/A		2.8	
Back reflection isolation stage	nm	1020		1200
Back reflection isolation	dB		30	
Storage Temperature	°C	-30		70
Case Operating Temperature	°C	15	25	45
Minimum Fiber Bend Radius	mm	30		
Fiber Buffer/tube Diameter	μm		900	
Fiber Clad Diameter	μm		125	
Fiber Core Diameter	μm		105	
Numerical Aperture	NA		0.22	
Soldering Temperature	°C			260
Soldering time	s			10
Dimensions	mm	25*43*11		
Mounting holes diameter/distance	mm	Ø3.2 / 20 * 38		
Fiber connector	Yes (SMA905)			
ROHS Compliant	Yes			

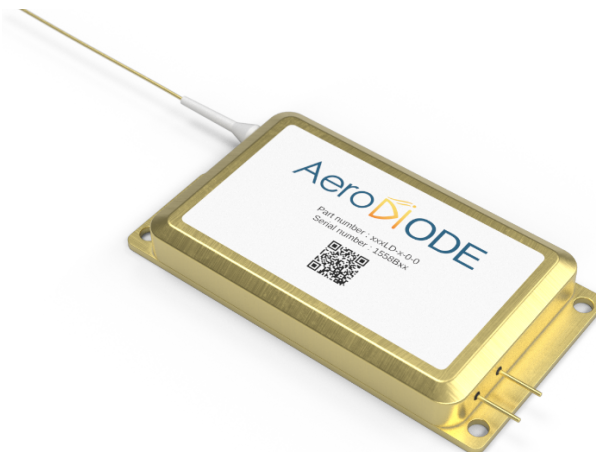
Please solder the pins when the level of current is over 6A



940 nm laser diode 70 W / 105 μm fiber

Reference: 940LD-4-0-0

SPECIFICATIONS	Unit	Min	Typ	Maximum
Optical parameters				
Output Power	W	70		
Center Wavelength	nm	935	940	945
Spectral Width (FWHM)	nm		6	
Threshold Current	A		0.8	
Operating Current	A		11.5	13.0
Operation Voltage	V		10.5	12.5
Conversion Efficiency	%		50	
Wavelength shift w Temperature	nm/°C		0.3	
Wavelength shift w Current	nm/A		0.7	
Back reflection isolation stage	nm	1020		1200
Back reflection isolation (optional)	dB		30	
Storage Temperature	°C	-30		70
Case Operating Temperature	°C	15	25	55
Minimum Fiber Bend Radius	mm	37.5		
Fiber Buffer/tube Diameter	μm		900	
Fiber Clad Diameter	μm		125	
Fiber Core Diameter	μm		105	
Numerical Aperture	NA		0.22	
Soldering Temperature	°C			260
Soldering time	s			10
Dimensions	mm	48*80*16		
Mounting holes (diameter/distance)	mm	Ø3.4 / 75*40		
Fiber connector		Yes (SMA905)		
ROHS Compliant		Yes		
Please solder the pins when the level of current is over 6A				

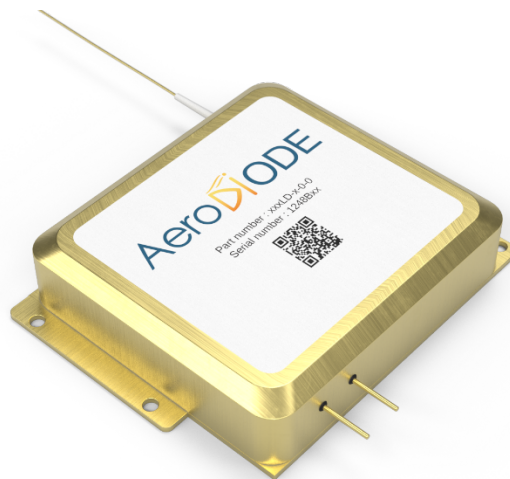


940 nm laser diode

150 W / 105 μ m fiber

Reference: 940LD-5-0-0

SPECIFICATIONS	Unit	Min	Typ	Maximum
Output Power	W	150		
Center Wavelength	nm	935	940	945
Spectral Width (FWHM)	nm		6.0	
Threshold Current	A		0.8	
Operating Current	A		13.5	14
Operation Voltage	V		22.5	24.0
Conversion Efficiency	%		50	
Wavelength shift w Temperature	nm/°C		0.3	
Wavelength shift w Current	nm/A		0.8	
Slope Efficiency	W/A		12.5	
Back reflection isolation stage	nm	1020		1200
Back reflection isolation (optional)	dB		30	
Storage Temperature	°C	-30		70
Case Operating Temperature	°C	15	25	45
Minimum Fiber Bend Radius	mm	30		
Fiber Buffer/tube Diameter	μ m		900	
Fiber Clad Diameter	μ m		125	
Fiber Core Diameter	μ m		105	
Numerical Aperture	NA		0.22	
Soldering Temperature	°C			260
Soldering time	s			10
Dimensions	mm	80*80*25		
Mounting holes (Diameter/distance)	mm	Ø3.3 / 74.4 * 38		
Fiber connector	Yes (SMA905)			
ROHS Compliant	Yes			
Please solder the pins when the level of current is over 6A				



940 nm laser diode 200 W / 200 μm fiber core

Reference: 940LD-6-0-0

SPECIFICATIONS	Unit	Min	Typ	Maximum
Output Power	W	200		
Center Wavelength	nm	935	940	945
Spectral Width (FWHM)	nm		6.0	
Threshold Current	A		0.8	
Operating Current	A		13.5	14.0
Operation Voltage	V		32	35
Conversion Efficiency	%		50	
Wavelength shift w Temperature	nm/°C		0.35	
Back reflection isolation stage	nm	1020		1200
Back reflection isolation (optional)	dB		30	
Storage Temperature	°C	-30		70
Case Operating Temperature	°C	15	25	45
Minimum Fiber Bend Radius	mm	35		
Fiber Buffer/tube Diameter	μm		900	
Fiber Clad Diameter	μm		155	
Fiber Core Diameter	μm		135	
Numerical Aperture	NA		0.22	
Soldering Temperature	°C			260
Soldering time	s			10
Dimensions	mm	80*80*25		
Mounting holes	mm	4*Ø3.3		
Fiber connector	Yes (HP-SMA905)			
ROHS Compliant	Yes			

Please solder the pins when the level of current is over 6A

